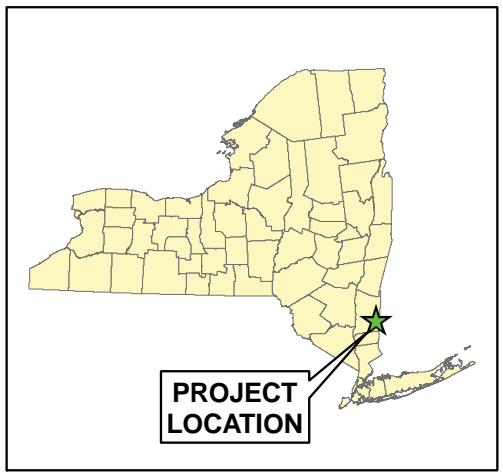
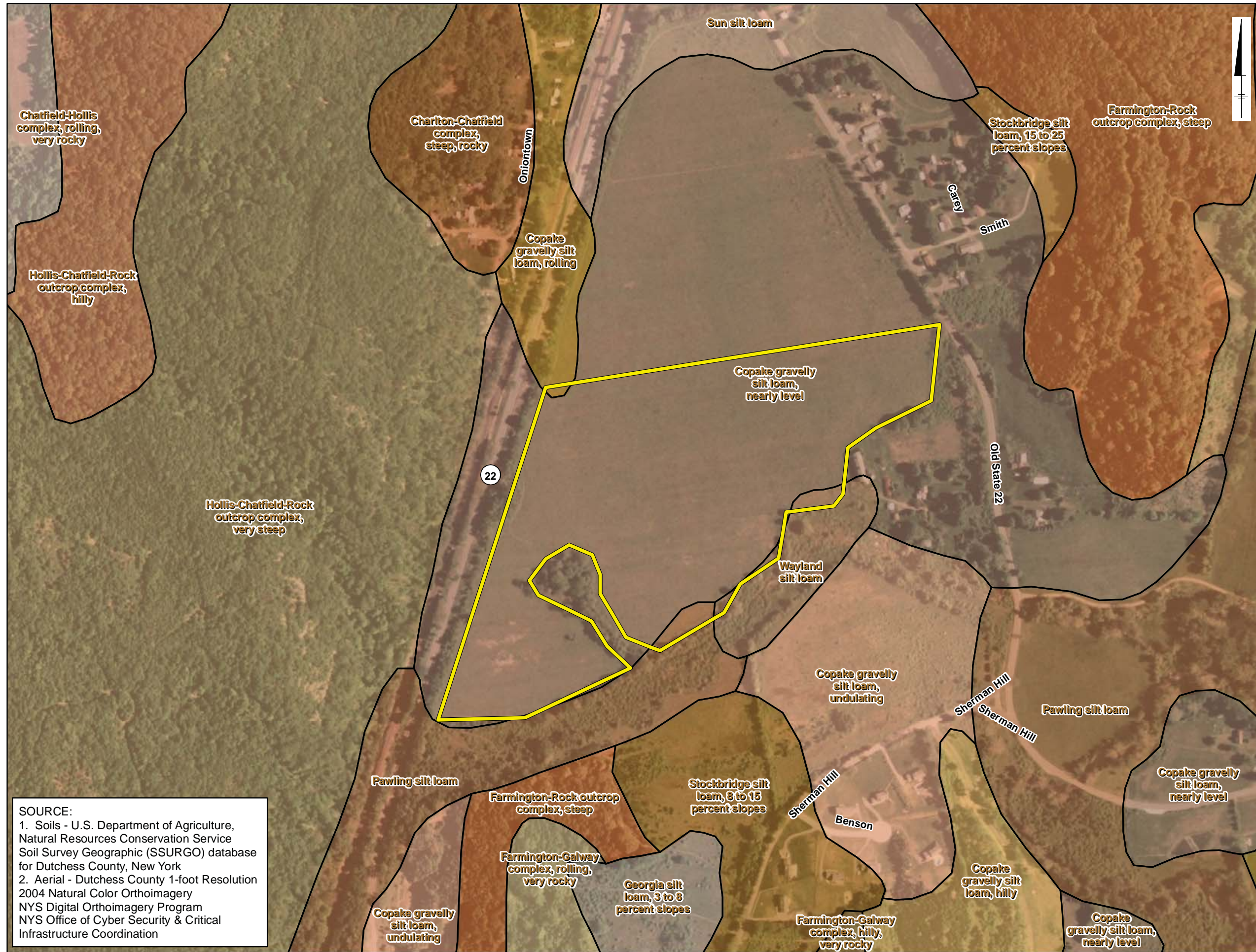
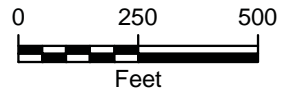


G:\projects\GIS\Projects\IPP - Misc\20090611_Crickethill\GIS\FIGURES\MXD\20110215_Section2\Fig2-5_CVEC_SitelaydownSoils_20110215.mxd - 2/15/2011 @ 4:34:33 PM



Legend

- Laydown Site
- Soils**
- Charlton-Chatfield complex, steep, rocky
- Chatfield-Hollis complex, rolling, very rocky
- Copake gravelly silt loam, hilly
- Copake gravelly silt loam, nearly level
- Copake gravelly silt loam, rolling
- Copake gravelly silt loam, undulating
- Farmington-Galway complex, hilly, very rocky
- Farmington-Galway complex, rolling, very rocky
- Farmington-Rock outcrop complex, steep
- Georgia silt loam, 3 to 8 percent slopes
- Hollis-Chatfield-Rock outcrop complex, hilly
- Hollis-Chatfield-Rock outcrop complex, very steep
- Pawling silt loam
- Stockbridge silt loam, 15 to 25 percent slopes
- Stockbridge silt loam, 8 to 15 percent slopes
- Stockbridge-Farmington complex, rolling, rocky
- Sun silt loam
- Wayland silt loam



CRICKET VALLEY ENERGY

**FIGURE 2-5
LAYDOWN SITE SOILS**

Town of Dover, Dutchess County, New York

SOURCE:
 1. Soils - U.S. Department of Agriculture, Natural Resources Conservation Service Soil Survey Geographic (SSURGO) database for Dutchess County, New York
 2. Aerial - Dutchess County 1-foot Resolution 2004 Natural Color Orthoimagery
 NYS Digital Orthoimagery Program
 NYS Office of Cyber Security & Critical Infrastructure Coordination