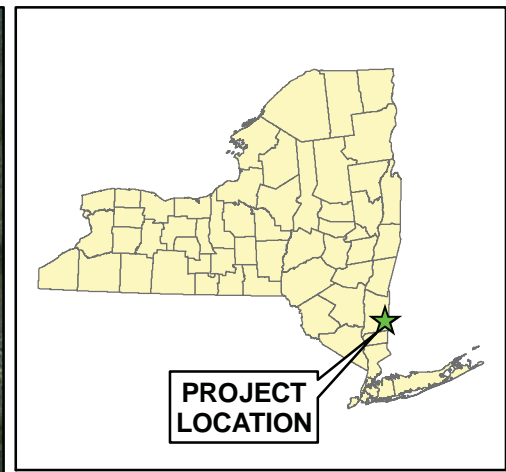
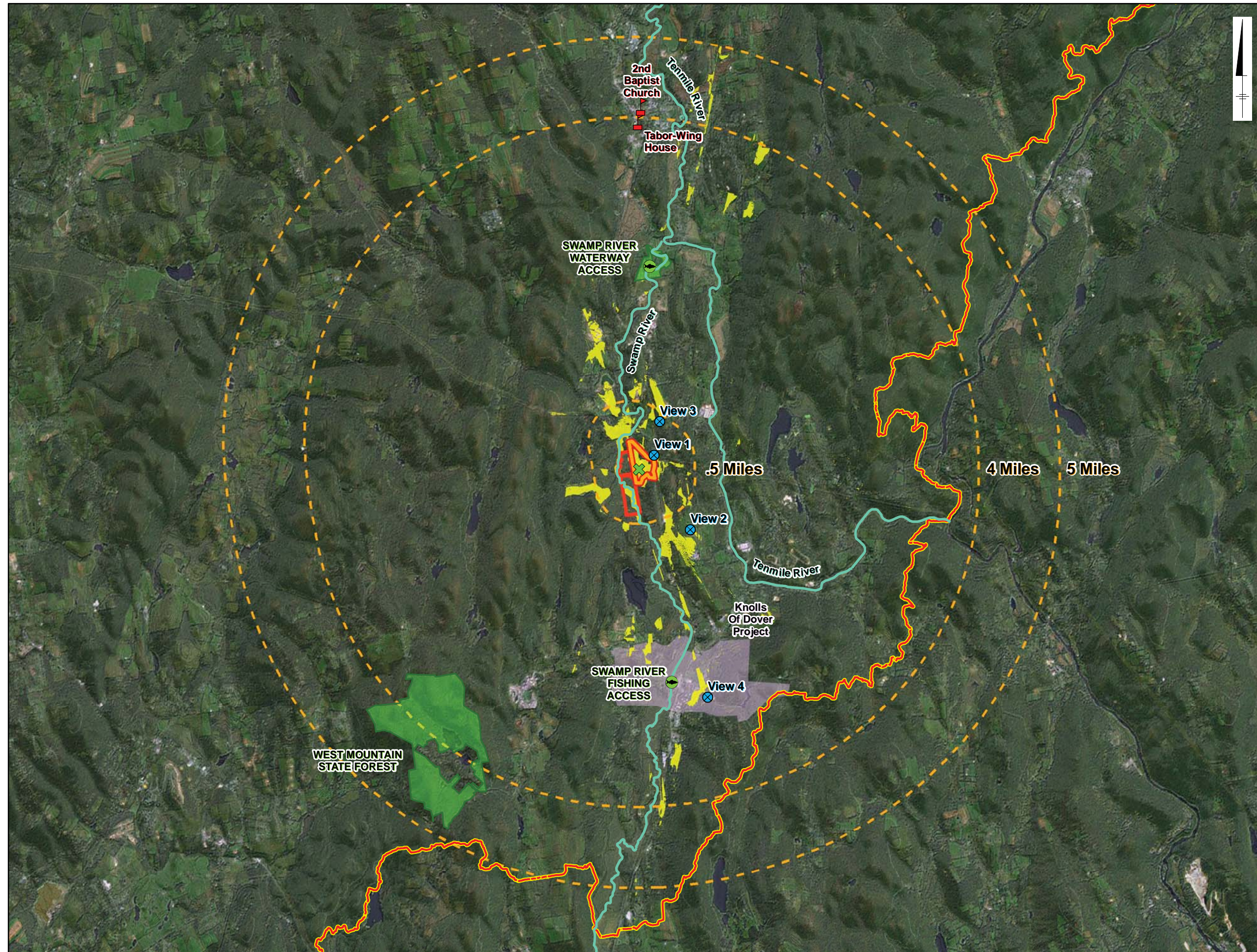


G:\project\GIS\Projects\PP_Misc\20090511_Cricket\FIGURES\FIGURES\MXD\20110217_Section6_VisualFig6-2-2_CVEC_ViewshedResources_20110217.mxd - 2/18/2011 @ 4:10:22 PM



Legend

- Combined Stack Center
- Photosimulation Viewpoint
- Property
- Project Development Area
- Potentially Visible Area

Resources of Concern

- Waterway/Fishing Access
- National Register of Historic Properties
- Appalachian Trail
- Hydrologic Resources
- Road Resources
- NYSDEC Lands
- Knolls Of Dover Project

Viewshed analysis run against 10m DEM with 20m height adjustment for tree cover.
 2005 Land Use/Land Cover data and aerial interpretation used to determine tree cover.
 Center location of 282.5ft (86.11m) used as observation point.



FIGURE 6.2-2
 VIEWSHED ANALYSIS INCLUDING VEGETATION SCREENING
 Town of Dover, Dutchess County, New York