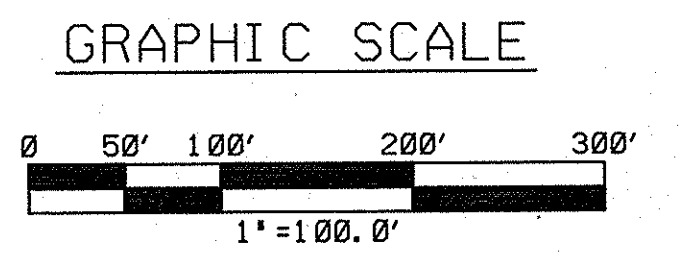
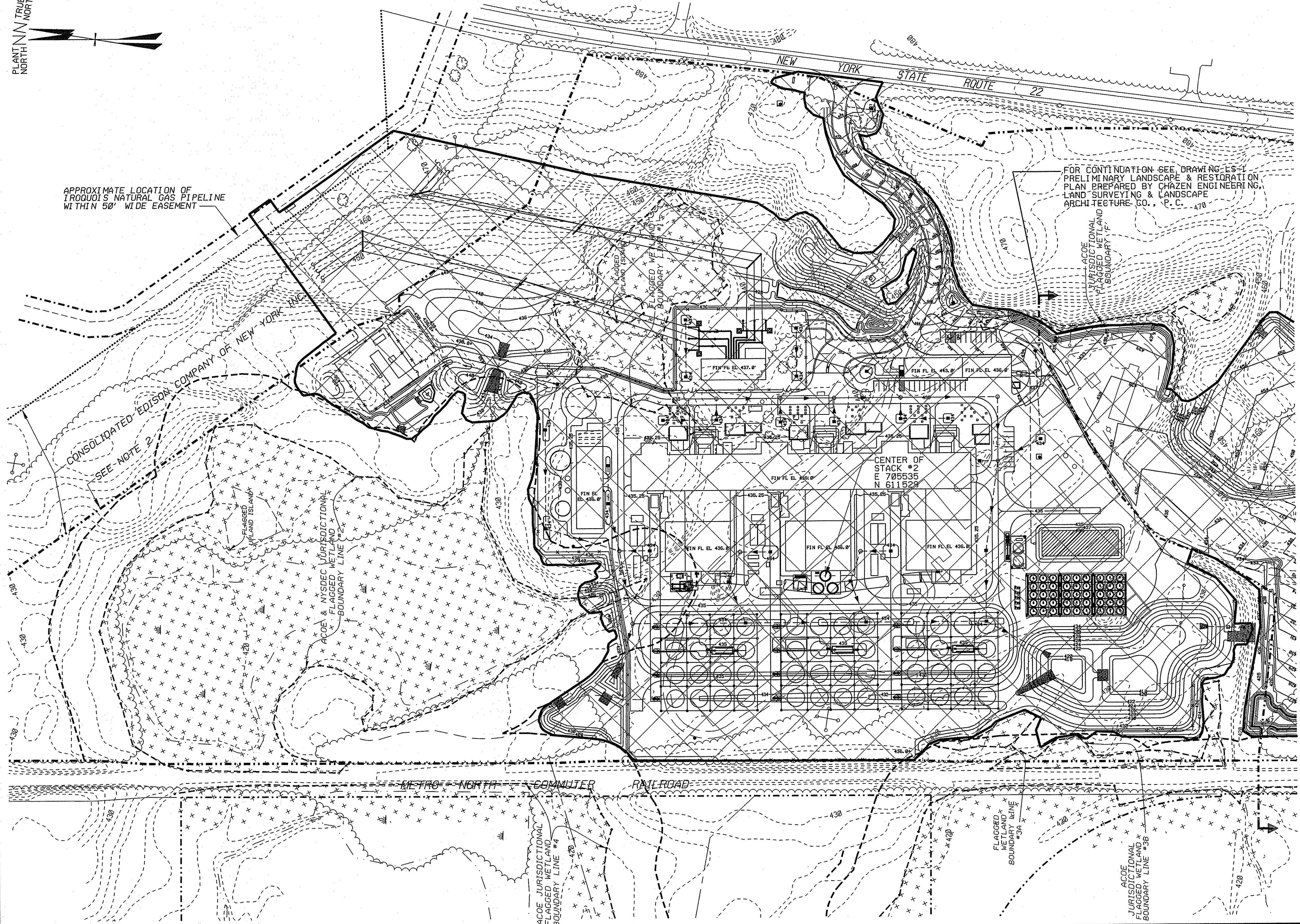


- NOTES**
- PROJECT INFORMATION:
 PROJECT NAME: CRICKET VALLEY ENERGY
 DEVELOPER: CRICKET VALLEY ENERGY CENTER, LLC.
 OWNER OF RECORD: HOWLANDS LAKE PARTNERS, LLC
 PO BOX 285,
 MOUNT KISCO, NY 10549.
 - PROPERTY LINE IS SUPERIMPOSED OVER CONSOLIDATED EDISON COMPANY EASEMENT LINE.
 - FOR GENERAL NOTES, SEE DRAWING C140.

APPROXIMATE LOCATION OF
 TROUDI'S NATURAL GAS PIPELINE
 WITHIN 50' WIDE EASEMENT

FOR CONTINUATION SEE DRAWING LS-1
 PRELIMINARY LANDSCAPE & RESTORATION
 PLAN PREPARED BY CHAZEN ENGINEERING,
 LAND SURVEYING & LANDSCAPE
 ARCHITECTURE CO., P.C.

- LEGEND**
- PROPERTY LINE
 - ▣ LIMIT OF FINAL GRADING & DISTURBANCE
 - - - EXISTING WETLAND & BUFFER
 - EXISTING FACILITY
 - 480- EXISTING CONTOURS
 - NEW FENCE
 - NEW CONSTRUCTION
 - - - BELOW GRADE PIPING
 - MANHOLE
 - CATCH BASIN
 - 480- NEW CONTOURS
 - ▲ SLOPE DIRECTION
 - ELECTRICAL POLE



SITE PLAN SHT: 4

Rev No	Revision	Date	Dwn	Chkd	Approved Chief Engr	Rev No	Revision	Date	Dwn	Chkd	Approved Chief Engr	Rev No	Revision	Date	Dwn	Chkd	Approved Chief Engr	Drawing Control				Engineering Review								
													F	REVISED TO INCORPORATE CLIENTS COMMENTS.		JCH			Purpose	Approved By	Date	Released By	Date	Disc	Engr	Date	CRICKET VALLEY ENERGY TOWN OF DOVER DUTCHESS COUNTY, NEW YORK DISTURBED AREAS PLAN			
																			For Information	ZTY	6/12	JCH	6/12				BURNS AND ROE ENTERPRISES, INC. Engineers and Constructors - Oradell, NJ New York Certificate of Authorization No. 0004677			
																			For Comment								Lead Engineer: C. GRAGEDA, Date: 6/6/09, Scale: 1"=100'-0"			
																			For Bid								Approved for Construction: Chief CIVIL Engineer, Work Order: 3000, Drawing No: C130, Sh: F			
																			For Fabrication								Richard J. Moltoza, State of New York Professional Engineer No. 084677			
																			For Construction								Richard J. Moltoza, State of New York Licensed Professional Engineer			

C130.DGN
16:52
06-JUN-2012